

WAGONS SINCE 1960



Wagon Models

4 Wheel / 6 Wheel / 8 Wheel
& Optional Features

8 / 10 / 12 / 14 Ton - 4 Wheel

12 / 14 / 16 Ton - 6 Wheel

16 Ton - 8 Wheel

HORST

WAGONS



Model 145

Farm Wagon



8 Ton

Shown with 11L x 15" Tires – 74" Track Width

- Model 145 – the ideal Hay Wagon. Suitable for Bale Thrower Racks, Flat Racks, medium size Grain Bins and will also serve as a medium duty Forage Wagon.
- Heavy duty construction of the steering assembly provides trouble free service for many years.

Standard Features

All Models



This version of our quick-hitch latch and front clevis is used on all models and sizes.



Horst exclusive bearings on king pin and center pivot for absolute no sway trailing - standard on all models.



We use Horst exclusive bearings on all steering pivots.

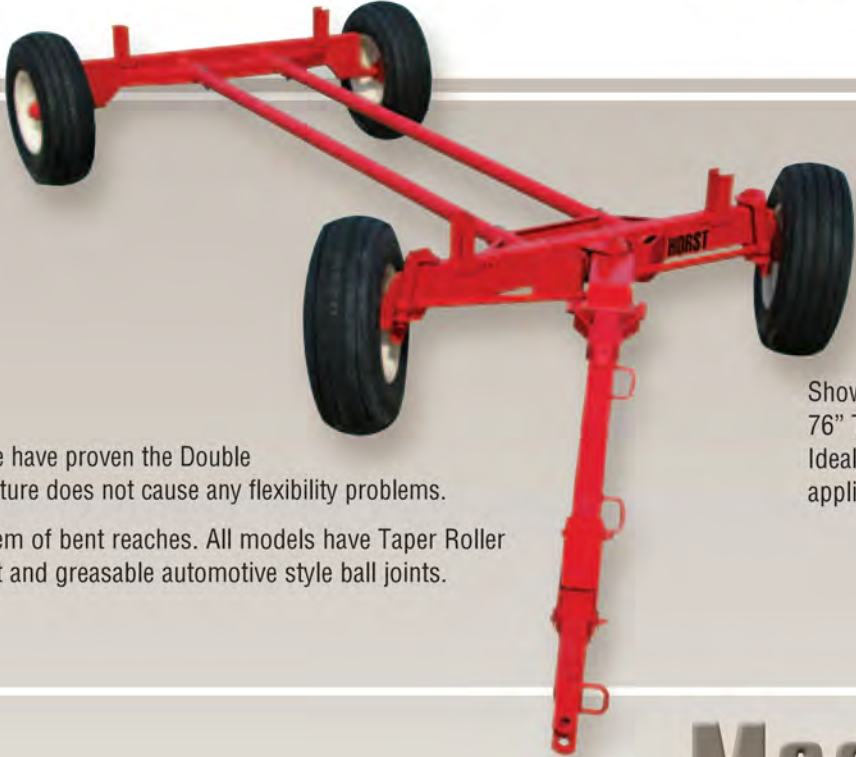
HORST
WAGONS



Model 185

Farm Wagon

10 Ton



- 45 years of field service have proven the Double Reach Feature. This feature does not cause any flexibility problems.
- It eliminates the problem of bent reaches. All models have Taper Roller Bearing Tongue Mount and greasable automotive style ball joints.

Shown with 11L x 15" HS Tires
 76" Track width
 Ideal for Forage Box and other applications

12 Ton



Shown with 12 x 22.5"
 Used Truck Tires
 82" Track width

- This heavy duty model incorporates the same basic design and features as the model 185 but has bigger axles, hubs and wheels.

Model 205

Farm Wagon



Same Model as left
 Shown with 12.5L x 15"
 HS Floatation Tires
 82" Track width

On all model wagons the steering assemblies are mounted on Taper Roller Bearings. Over 40 years field service has proven that this feature plus automotive style Ball-In-Socket Tie Rod Ends assures long life and no sway trailing.



Bearings standard in tongue pivot on all models.



HORST WAGONS

Model 275

Farm Wagon

14 Ton



Shown with 12 x 22.5" used Truck Tires – 89" Track Width

- Model 275 – This heavy duty model incorporates the same basic design as the Model 205 but has larger hubs, spindle and axles.



Exclusive to Model 275: Longer reach support for more strength.

HORST
WAGONS



Model 865 QuadSteer

Heavy Duty 8-Wheel Wagon

16 TON – THE TRUE POWER OF 4X4

Horst wagons welcomes you to a new generation of running gear. Designed for smoother travel and minimal soil compaction, the new 865 QuadSteer is changing the way you move from the field to the farm.

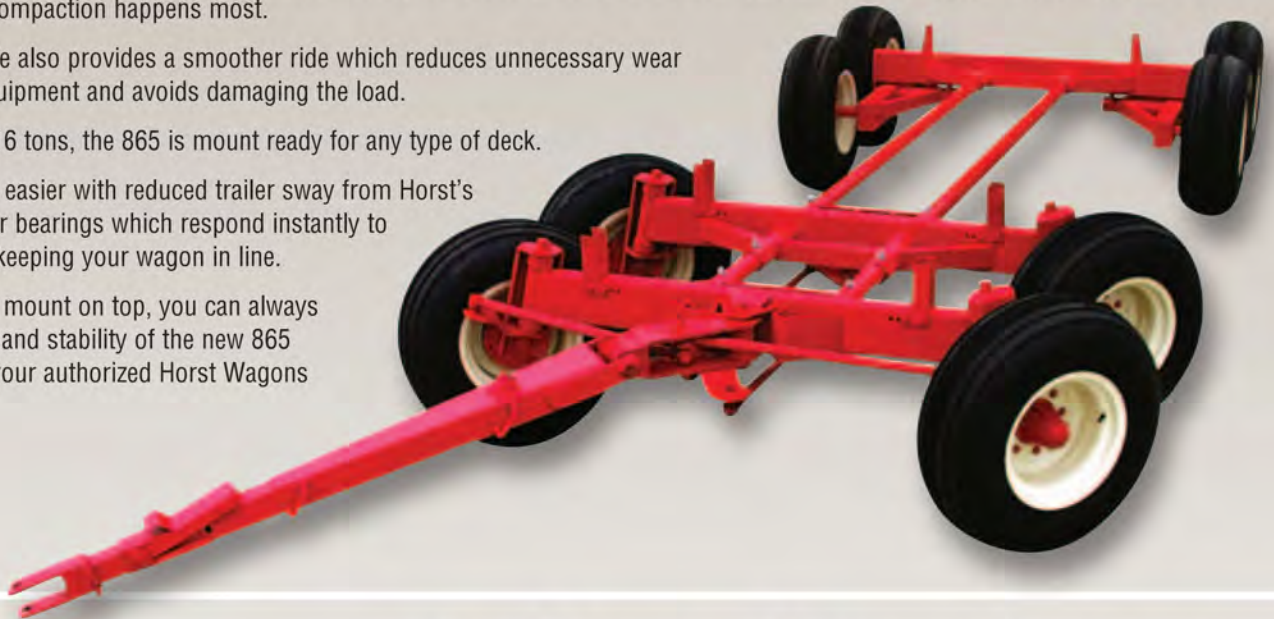
With the addition of a dual front axle set, the new 865 combines two advantages into one: improved floatation and easier steering. Unlike any other running gear, the 865's second steering axle provides better weight distribution at the front of the wagon - especially while turning, when soil compaction happens most.

The double front axle also provides a smoother ride which reduces unnecessary wear and tear on your equipment and avoids damaging the load.

Built to carry up to 16 tons, the 865 is mount ready for any type of deck.

Road travel is made easier with reduced trailer sway from Horst's proven tapered roller bearings which respond instantly to minor movements, keeping your wagon in line.

No matter what you mount on top, you can always rely on the strength and stability of the new 865 QuadSteer. Talk to your authorized Horst Wagons dealer today.



All Models

Optional Features



Shown here is optional spring balancer for ease and convenience of hook-up.



3/8" GR. 70 plated transport chain meets current D.O.T. standards.



Hydraulic disc brakes shown

Factory installed hydraulic disc or drum surge brakes for added control and safety.



HORST
WAGONS

Model 245

Tandem

12 Ton



Shown with 11L x 15" HS Tires

TANDEM MODELS OFFER...

- Increased carrying capacity.
- Improved floatation.
- Smoother ride.

The double reach feature of these wagons supplies the necessary strength for turning tandems around sharp corners.



Front view of 245 Tandem



Side view of 245 Tandem

HORST
WAGONS

14 Ton

Model 265

Tandem



Rear view of 265 Tandem

Shown with 12.5L x 15" HS Tires

- Model 265 Tandem is built on same design as the Model 245. Its larger axles, hubs and spindles make for a more rugged wagon to carry the heavier loads.

16 Ton

Model 325

Tandem



Shown with 12.5L x 15" Tires

- Model 325 Tandem is built on same design as the Model 275. It's larger axles, hubs and spindles make for a more rugged wagon to carry the heavier loads.
- This model is also available with 11 or 12 x 22.5, 15 or 16 x 22.5 used truck tires.



Heavy duty King Pins with taper roller bearings (all models)



HORST WAGONS

Specifications

for Wagons and Optional Features

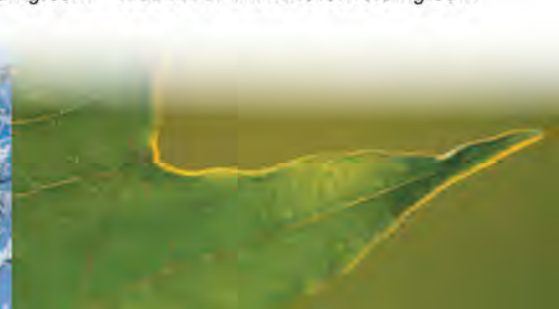
	4 WHEEL MODELS				6 WHEEL MODELS			8 WHEEL
MODEL	145	185	205	275	245	265	325	865
CAPACITY	16,000 LB	20,000 LB	24,000 LB	28,000 LB	24,000 LB	28,000 LB	32,000 LB	32,000 LB
TRACK WIDTH								
15 x 6 x 6	74"	76"	N/A	N/A	76"	N/A	N/A	N/A
15 x 8 x 6	74"	76"	N/A	N/A	76"	N/A	N/A	N/A
15 x 10 x 6	75"	77"	N/A	N/A	77"	N/A	N/A	N/A
16 x 6 x 6	74"	76"	N/A	N/A	76"	N/A	N/A	N/A
16 x 8 x 6	74"	76"	N/A	N/A	76"	N/A	N/A	N/A
15 x 10 x 8	N/A	N/A	82"	N/A	N/A	82"	N/A	82"
16 x 10 x 8	N/A	N/A	82"	N/A	N/A	82"	N/A	82"
22.5 x 8.25 x 8	N/A	N/A	82"	89"	N/A	N/A	89"	82"
22.5 x 11.25 x 8	N/A	N/A	88"	86"	N/A	N/A	86"	88"
SPINDLES	1-3/4" DIA. C1045 HOT ROLLED	2" DIA. C1045 HOT ROLLED	2-1/4" DIA. C1045 COLD ROLLED	2-3/4" DIA. C1045 COLD ROLLED	FRONT 2-3/4" DIA. C1045 COLD ROLLED REAR 2-1/4" DIA. C1045 COLD ROLLED	2-1/4" DIA. C1045 COLD ROLLED	2-3/4" DIA. C1045 COLD ROLLED	2-1/4" DIA. C1045 COLD ROLLED
HUBS	6 BOLT 4000 LB.	6 BOLT 6000 LB.	8 BOLT 6500 LB.	8 BOLT 8000 LB.	6 BOLT 6000 LB.	8 BOLT 6500 LB.	8 BOLT 8000 LB.	8 BOLT 6500 LB.
BEARINGS - Bore Size (Inner / Outer)	TAPER ROLLER 1.50 / 1.25	TAPER ROLLER 1.80 / 1.38	TAPER ROLLER 1.80 / 1.38	TAPER ROLLER 2.165 / 1.625	TAPER ROLLER 1.80 / 1.38	TAPER ROLLER 1.80 / 1.38	TAPER ROLLER 2.165 / 1.625	TAPER ROLLER 1.80 / 1.38
FRONT AXLE	5 1/2 x 3 x .188 WALL	6 x 3 x .250 WALL	7 x 3 x .250 WALL	8 x 3 x .250 WALL	6 x 3 x .210 WALL	7 x 3 x .250 WALL	8 x 3 x .250 WALL	7 x 3 x .250 WALL
REAR AXLE	5 1/2 x 3 x .188 WALL	6 x 3 x .250 WALL	7 x 3 x .250 WALL	8 x 3 x .250 WALL	6 x 3 x .250 WALL	7 x 3 x .313 WALL	8 x 3 x .250 WALL	7 x 3 x .313 WALL
TONGUE BRACKET MOUNTING	1-1/2" BOLT BEARING MTD.							
TONGUE BOLT	7/8" DIAMETER	1-1/8" DIAMETER						
TONGUE LATCH	RETRACTABLE AUTOMATIC RELOCK - STANDARD ON ALL MODELS							
REACH POLES	3" O.D. x .188 WALL - ROUND TUBE							
BOLSTER STAKES	ADJUSTABLE 30" - 40" - 42"							
STEERING	AUTOMOTIVE TYPE							
TIE ROD ENDS	GREASABLE AUTOMOTIVE STYLE BALL JOINTS							
WHEEL BASE	ADJUSTABLE							
HEIGHT FROM GROUND TO TOP OF BUNK	23" ON 9.5 x 15 TIRES	24" ON 11L x 15 TIRES	26" (12.5 X 16 TIRES) 30" (11 X 22.5 TIRES)	30" ON 11 x 22.5 TIRES	23" ON 11L x 15 TIRES	26" (12.5 X 16 TIRES) 30" (11 X 22.5 TIRES)	30" ON 11 x 22.5 TIRES	26" (12.5 X 16 TIRES) 30" (11 X 22.5 TIRES)
APPROX. WEIGHT	610 LB.	750 LB.	1010 LB.	1120 LB.	1050 LB.	1290 LB.	1450 LB.	1720 LB.
2 WHEEL HYD. DRUM SURGE BRAKES	OPTIONAL	N/A	OPTIONAL	OPTIONAL	N/A	OPTIONAL	OPTIONAL	OPTIONAL
4 WHEEL HYD. DRUM SURGE BRAKES	N/A	N/A	N/A	OPTIONAL	N/A	OPTIONAL	OPTIONAL	OPTIONAL
2 WHEEL HYD. DISC BRAKES	N/A	N/A	N/A	OPTIONAL	N/A	N/A	OPTIONAL	N/A
SAFETY CHAIN (optional)	3/8" GR. 70							
SPRING BALANCER KIT	OPTIONAL							
SPRING CUSHION TONGUE	OPTIONAL (NOT AVAILABLE WITH BRAKES)							
ROCKING BOLSTER	OPTIONAL							

HORST WELDING • 8082 Road 129, RR 3, Listowel, Ontario N4W 3G8 Canada

PHONE: 519-291-4162 **TOLL FREE:** 866-567-4162

FAX: 519-291-5388 **EMAIL:** sales@horstwelding.com **WEBSITE:** www.horstwelding.com

HORST
WAGONS



WAGONS SINCE 1960

EXTRA HEAVY DUTY FARM WAGONS

WITH THE HONEST TON RATING AND NO SWAY TRAILING!

15 - 30 TON • 4 AND 6 WHEEL MODELS



Shown: Model 285 – 15 Ton

4 WHEEL MODELS

MODEL 285 – 15 TON

MODEL 365 – 20 TON

- Oscillating front axle keeps level on uneven ground.
- Short turning radius.
- Wide track for extra stability
- Retractable automatic re-lock standard on tongue.

HORST

WAGONS



Model 505 & 605

Extra Heavy Duty 22 and 30 Ton



22 & 30 Ton

Shown: Model 505

TANDEM MODELS OFFER...

- Increased carrying capacity.
- Improved floatation.
- Smoother ride.

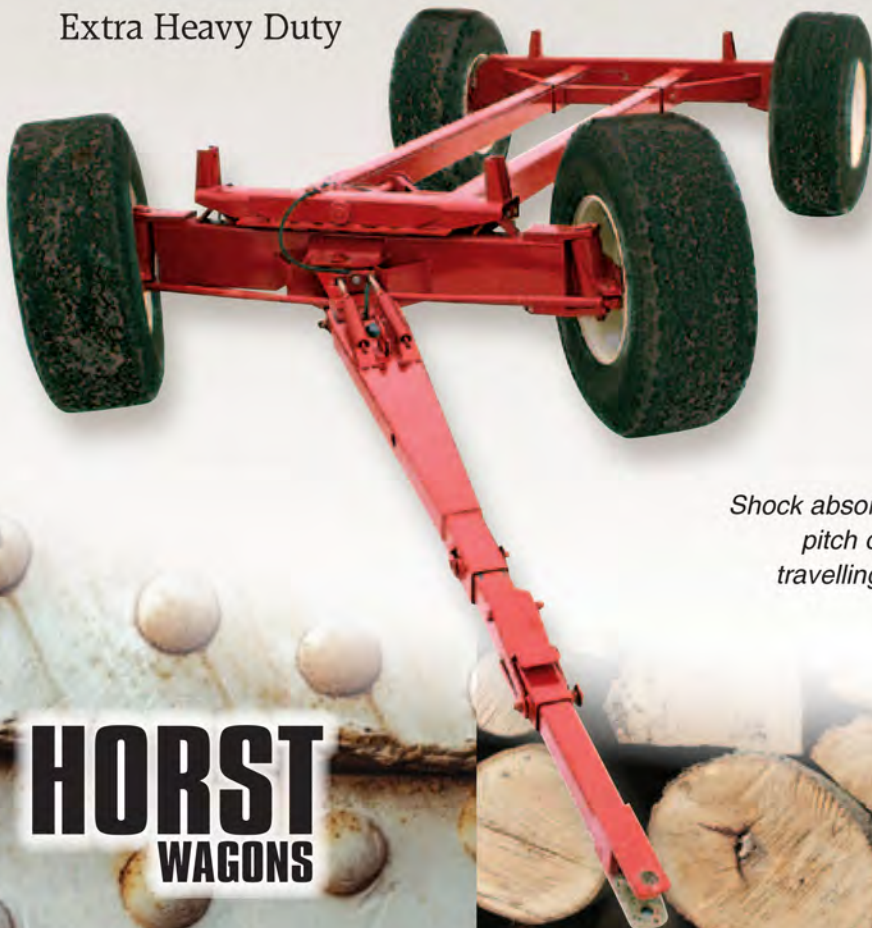
The double reach feature of these wagons supplies the necessary strength for turning tandems around sharp corners.



Model 485

Extra Heavy Duty

24 Ton



Shown: Model 485

- Massively built on same proven design of our other wagons.
- A great match for today's large V-boxes and dump boxes.
- Comes with 10 bolt hubs and H.D. – 14,000 lb. wheels.
- Shown with optional brakes.

Shock absorbers reduce pitch of load when travelling over rough terrain.



HORST
WAGONS



Extra Heavy Duty

STANDARD FEATURES

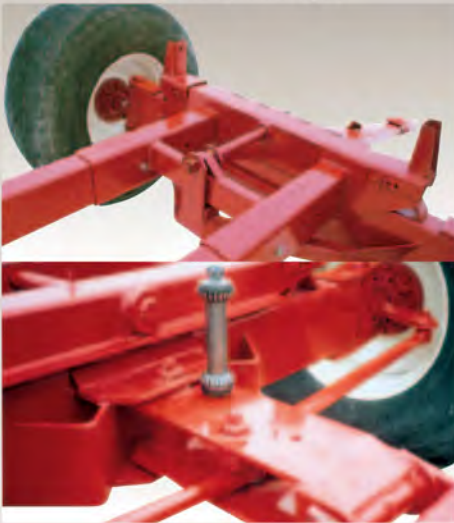
OSCILLATING FRONT AXLE

A distinctive feature on the wagons is an oscillating front axle, differing from a rocking bolster in that the front bolster is coupled rigid to the rear end.

Front and rear axles follow ground contours as wagon travels over uneven ground, but the front bolster must remain parallel with the rear bolster.

The load does not receive any alternating stresses when travelling on uneven ground.

*Rear view of front bolster.
Note extra depth for strength.*



*Exclusive automotive style
ball-in-socket tie rod ends.*



*< Steering assembly mounted
on tapered roller bearings
completely eliminating free play.*

*Bolsters remain parallel as front axle
oscillates over uneven ground.*



*King pins mounted on tapered roller
bearings for easier turning and
absolute no sway trailing.*

... THESE STANDARD FEATURES ON THE HORST EXTRA HEAVY DUTY WAGONS ASSURE LONG LIFE AND NO SWAY TRAILING.

*Factory installed hydraulic disk
brakes for added control and safety.*



*Double spring balancer makes tongue
lighter for easier hook-up.*



OPTIONAL FEATURES

*1/2" GR. 80 plated transport chain
meets current D.O.T. standards.*



HORST

WAGONS

Extra Heavy Duty Specifications

for Wagons and Optional Features

MODEL	4 WHEEL MODELS			6 WHEEL MODELS	
	285 8 Bolt Hub	365 8 Bolt Hub	485 10 Bolt Hub	505 8 Bolt Hub	605 10 Bolt Hub
CAPACITY	30,000 LB	40,000 LB	48,000 LB	44,000 LB	60,000 LB
TRACK WIDTH with 22.5 x 13.5 x 8 Wheels (For used 18" x 22.5" Truck Tires) 22.5 x 8.25 x 8 Wheels (For used 11" or 12" x 22.5" Truck Tires) W14C x 16.1 x 8 Wheels (For new 16.5" x 16.1" Implement Flotation) W16C x 16.1 x 8 Wheels (For new 19.5" or 21.5" x 16.1" Implement Flotation)	86" 89" 93" 97"				
SPINDLES	2-3/4" DIA. C1045 COLD ROLLED	3" DIA. 1144 STRESS PROOF	4" DIA. C1045 COLD ROLLED	2-3/4" DIA. C1045 COLD ROLLED	4" DIA. C1045 COLD ROLLED
HUBS	8 BOLT 8000 LB.	8 BOLT 10000 LB.	8 BOLT 16000 LB.	8 BOLT 10000 LB.	8 BOLT 16000 LB.
FRONT AXLE	8 x 4 x .250 WALL	10 x 4 x .250 WALL	10 x 4 x .500 WALL	10 x 4 x .250 WALL	10 x 4 x .500 WALL
REAR AXLE	8 x 4 x .188 WALL	10 x 4 x .188 WALL	10 x 4 x .375 WALL	10 x 4 x .375 WALL	10 x 4 x .500 WALL
TONGUE BRACKET MOUNTING	1-1/2" BOLT BEARING MTD.				
TONGUE BOLT	1-1/8" DIA.	1-1/8" DIA.	1-1/2" DIA.	1-1/8" DIA.	1-1/2" DIA.
BOLSTER	FLEXIBLE FRONT				
REACH TUBES	6 x 4 x .188 TUBES				
BOLSTER STAKES	42.5" FIXED				
STEERING	AUTOMOTIVE TYPE				
TIE ROD ENDS	GREASABLE AUTOMOTIVE STYLE BALL JOINTS				
WHEEL BASE	ADJUSTABLE				
HEIGHT FROM GROUND TO TOP OF BUNK	32" ON 18 x 22.5 TIRES	34" ON 18 x 22.5 TIRES	34" ON 18 x 22.5 TIRES	32" ON 18 x 22.5 TIRES	34" ON 18 x 22.5 TIRES
APPROX. WEIGHT (with 22.5 x 13.5 wheels)	1650 LB.	1850 LB.	2450 LB.	2850 LB.	3450 LB.
2 WHEEL HYDRAULIC DISC BRAKES	OPTIONAL				
4 WHEEL HYDRAULIC DISC BRAKES	N/A	N/A	N/A	OPTIONAL	OPTIONAL
SAFETY CHAIN	OPTIONAL				
SPRING BALANCER KIT	OPTIONAL				
SPRING CUSHION TONGUE	OPTIONAL				

HORST WELDING

8082 Road 129, RR 3, Listowel, Ontario N4W 3G8 Canada

PHONE: 519-291-4162 **TOLL FREE:** 866-567-4162

FAX: 519-291-5388 **EMAIL:** sales@horstwelding.com **WEBSITE:** www.horstwelding.com

Available At:

HORST
WAGONS