

Worksaver.

*Designed.
Engineered.
Remarkable
Value.*



3 POINT ADAPTER for SKID STEER

Category I attachments



Worksaver

3 Point Adapter for Skid Steer

3 POINT ADAPTER SPECIFICATIONS

Attachments accepted	Category I
Mounting.....	“Universal” Skid Steer Quick Attach Mount
Construction	Heavy-Duty Welded Steel
Adapter width (in/mm)	44-1/2 (1130 mm)
Adapter height (in/mm)	18-3/4 (476 mm)
Lug spacing inside to inside (in/mm)	27-1/8 (689 mm)
Lug spacing outside to outside	29-5/8 (752 mm)
Shipping weight (lb./kg)	174 / (79 kg)
Product Computer Number	862865

- Engineered for Skid Steers with “universal” quick attach system.
- Allows the use of category I attachments.
- Increase versatility of Skid Steer without purchasing additional attachments.
- One set of adapter bushings is supplied.



READ AND UNDERSTAND OPERATOR'S MANUAL BEFORE OPERATION.

Worksaver Inc. has a corporate policy of continuous product improvement and development; therefore, specifications are subject to change without any advance notice. Worksaver Inc. is not responsible for differences between specifications or illustrations contained in this publication and the actual equipment.

Worksaver.



Worksaver, Inc.

P.O. Box 100, Litchfield, IL 62056-0100
Phone: 217-324-5973 • Fax: 217-324-3356
E-mail: sales@worksaver.com
Web: www.worksaver.com

Information Provided By:



Worksaver.

**Designed.
Engineered.
Remarkable
Value.**



WORKSAVER®

Pallet Fork Attachments

Pallet Forks for Skid Steers and Tractor Front Loaders.




- **Models available with integrated brackets for skid steers, John Deere 400/500/600/700 series loaders, and loaders with global attaching method.**
- **Optional interfacing quick-attach brackets available for most other loader models.**

- **Available for tractor loaders, skid steers, and compact tractors.**
- **2,000 lb. to 5,500 lb. capacity.**
- **All models feature tapered solid steel alloy forks for long life.**
- **Premium forks include spring loaded latches (except ULF-2046) for easy adjustment spacing.**



- **Skid steer pallet forks have step-through design for easy cab access and excellent visibility.**
- **Skid steer models are designed to mount to any skid steer with the “Universal” quick-attach mounting system.**
- **Provides versatility for your skid steer or tractor front loader.**
- **Three models of clamp-on bucket forks, 1,000-4,000 lbs.**

Worksaver Pallet Fork Specifications

For Skid Steer Loaders & Tractor Front Loaders With The "Universal" Quick Attach System			For Tractor Loaders	For Compact Tractor Loaders
Model	SSPF-442	SSPF-448	PF-448	ULF-2046
Eq. Used On	Skid Steer Loader	Skid Steer Loader	Tractor Loader	Loader < 40 hp
Capacity (lbs./kg)	4,000 / 1,814	4,000 / 1,814	4,000 / 1,814	2,000 / 907
Frame Construction	Welded Steel	Welded Steel	Welded Steel	Welded Steel
Mounting	"Universal" Skid Steer	"Universal Skid Steer	Std. Pin-type*	Std. Pin-type*
Fork Spacing	6" to 40"	6" to 40"	6" to 50"	6" to 45"
Fork Carrier	Notched Rail	Notched Rail	Notched Rail	H.D. Steel Rod
Forks	1-1/4" x 4" w/ Latch	1-1/4" x 4" w/ Latch	1-1/4" x 4" w/ Latch	1-1/4" x 3"
Usable Fork Length	42"	48"	48"	46"
Weight (lbs. / kg)	345 / 157	359 / 163	460 / 209	352 / 160
Item Number	832400	832415	831830	830780
John Deere Integrated Frame Pallet Forks				Clamp-On Bucket
Model	JDPF-5442	JDPF-5448	JDPF-6748	
Eq. Used On	John Deere Front Loader	John Deere Front Loader	John Deere Front Loader	
Capacity (lbs./kg)	4,000 / 1,814	4,000 / 1,814	5,500 / 2495	
Frame Construction	Welded Steel	Welded Steel	Welded Steel	
Mounting	400/500 Series JD	400/500 Series JD	600/700 Series JD	
Fork Spacing	6" to 40"	6" to 40"	6" to 40"	
Fork Carrier	Notched Rail	Notched Rail	Notched Rail	
Forks	1-1/4" x 4" w/ Latch	1-1/4" x 4" w/ Latch	1-1/2" x 4" w/ Latch	
Fork Length (in/cm)	42 / 107	48 / 122	48 / 122	
Weight (lbs. / kg)	345 / 157	359 / 163	373 / 169	
Item Number	832420	832435	832440	
Global (Euro Hook Style) Integrated Frame Pallet Forks				Clamp-On bucket
Model	GLPF-442	GLPF-448	GLPF-5548	BF-1000, 2000, 4000
Eq. Used On	Tractor Front Loader	Tractor Front Loader	Tractor Front Loader	Loader Buckets
Capacity (lbs./kg)	4,000 / 1,814	4,000 / 1,814	5,500 / 2495	1,000-4,000 lbs.
Frame Construction	Welded Steel	Welded Steel	Welded Steel	Welded Steel
Mounting	Global Carrier	Global Carrier	Global Carrier	Loader Bucket
Fork Spacing	6" to 40"	6" to 40"	6" to 40"	Adjustable
Fork Carrier	Notched Rail	Notched Rail	Notched Rail	N/A
Forks	1-1/4" x 4" w/ Latch	1-1/4" x 4" w/ Latch	1-1/2" x 4" w/ Latch	Fabricated Steel
Fork Length (in/cm)	42 / 107	48 / 122	48 / 122	35", 42", & 42"
Weight (lbs. / kg)	345 / 157	359 / 163	373 / 169	78 lb./ 102 lb./ 191 lb.
Item Number	832452	832458	832460	831950, 831930, 831960
* Optional Interfacing Brackets Available				

 **READ AND UNDERSTAND OPERATOR'S MANUAL BEFORE OPERATION.**

 **NEVER ALLOW CHILDREN OR BYSTANDERS AROUND SKID STEER OR TRACTOR WHEN YOU ARE USING EQUIPMENT.**

Worksaver Inc. has a corporate policy of continuous product improvement and development; therefore, specifications are subject to change without any advance notice. Worksaver Inc. is not responsible for differences between specifications or illustrations contained in this publication and the actual equipment.



Worksaver, Inc.

P.O. Box 100, Litchfield, IL 62056-0100
 Phone: 217-324-5973 • Fax: 217-324-3356
 E-mail: sales@worksaver.com
 Web: www.worksaver.com

Information Provided By:



Worksaver

*Designed.
Engineered.
Remarkable
Value.*

Worksaver® ETG Series Skid Steer Tine Grapple

- Designed for use on skid steers (and tractor front loaders) utilizing the “Universal” skid steer attaching system.
- Ideal for raking, piling, and loading brush and other hard to handle materials while leaving dirt behind.
- Unique upper grapple design provides clamping force to hold material securely.
- Greaseable pivot points on upper grapple for long service life.
- Low profile design offers great forward visibility for superior control in close quarters and easy access to skid steer seat.
- Shield plate on upper grapple provides protection for hydraulic cylinder.

ETG Tine Grapple Specifications

Model	ETG-5	ETG-6
Overall width (in/cm)	61.5 / 156	71.75 / 182
Overall depth (in/cm)	35.5 / 90	35.5 / 90
Inside depth (in/cm)	28.5 / 72	28.5 / 72
Overall height (in/cm)	25.5 / 65	25.5 / 65
Grapple opening (in/cm)	34 / 86	34 / 86
Upper grapple width (in/cm)	34 / 86	34 / 86
Number of tines	7	8
Tine spacing (in/cm)	10 / 25	10 / 25
Cylinder pressure rating (psi/bar)	2500 / 172	2500 / 172
Cylinder hoses / flat-faced couplers	Standard	Standard
Integral mounting system	“Universal” Skid Steer	“Universal” Skid Steer
Weight (lb/kg)	492 / 223	520 / 236
Horse power range	30 – 80 HP	30- 80- HP
Product Item No.	811020	811025

Be sure tractor / skid steer is properly counterbalanced.



Worksaver, Inc.

P.O. Box 100, Litchfield, IL 62056-0100
Phone: 217-324-5973 • Fax: 217-324-3356
E-mail: sales@worksaver.com
Web: www.worksaver.com

Information Provided By:



Worksaver.

*Designed.
Engineered.
Remarkable
Value.*



Crane Boom for Skid Steer

Versatile tool design for the way you work. Ideal for moving or loading hard to handle objects.



Worksaver Boom Crane for Skid Steer

SKID STEER BOOM CRANE SPECIFICATIONS

Lift Capacity at farthest attaching point* (lb./kg).....	1700 / (771 kg)
Lift Capacity at middle attaching point* (lb./kg)	2000 / (907 kg)
Lift capacity at closest attaching point* (lb./kg)	2200 / (998 kg)
Overall boom length (in/mm)	78 / (1981 mm)
Boom construction	3" Square Steel Tubing
Mounting	"universal" Skid Steer Quick-attach system
Shipping weight (lb./kg)	193 / (87.5 kg)
Product Computer Number	

**Dependent on lift capacity of the Skid Steer.*

- Designed for strength, durability and reliability.
- Ideal for lifting or moving objects on the job site.
- Features three lifting points for increased flexibility in loading and lifting.
- All welded steel construction for long life.
- Boom utilizes 3" square tube stock providing strength and durability.
- Clevis and chain hook provided as standard equipment.
- Mounts on any Skid Steer with "universal" attaching system.



READ AND UNDERSTAND OPERATOR'S MANUAL BEFORE OPERATION.

Worksaver Inc. has a corporate policy of continuous product improvement and development; therefore, specifications are subject to change without any advance notice. Worksaver Inc. is not responsible for differences between specifications or illustrations contained in this publication and the actual equipment.

Worksaver.



Worksaver, Inc.

P.O. Box 100, Litchfield, IL 62056-0100
Phone: 217-324-5973 • Fax: 217-324-3356
E-mail: sales@worksaver.com
Web: www.worksaver.com

Information Provided By:



Worksaver.

Implements
Designed for
Your
Lifestyle.

Worksaver Low Profile Scrap Buckets and Tine Grapples for Skid Steers



Skid Steer Low Profile Scrap Bucket

The LPSB series Scrap Bucket provides material handling on the construction site for moving demolition debris, rocks, brush, and dirt. Ideal for storm clean-up, landscaping, or moving hard to handle materials. Features 3,000 psi cylinders with cylinder guards to protect the cylinders and components. Hoses are equipped with "connect under pressure" flat-faced couplers. The scrap bucket's cutting edge is drilled to accept an optional replaceable and reversible beveled cutting edge which provides increased bucket strength while extending bucket life.

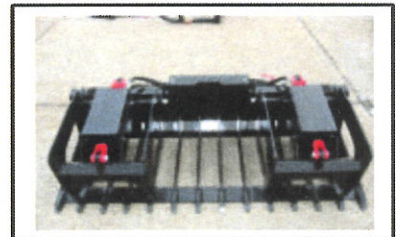


Scrap Bucket Specifications

Model	LPSB-72	LPSB-78	LPSB-84
Overall Width (in/cm)	72 / 183	78 / 198	84 / 213
Bucket Depth (in/cm)	26 / 66		
Grapple Opening (in/cm)	36.5 / 93		
2 - Hydraulic Cyl. (psi/bar)	3000 / 207		
Flat-Faced Couplers (in/cm)	1/2 / 13 Body - Connect Under Pressure		
Mount Type	"Universal" Skid Steer		
Weight (lb/kg)	791 / 359	823 / 373	855 / 388
Item #	811780	811820	811860
Optional Bolt-on Reversible Cutting Edge (in/cm)	3/4 x 8 / 1.9 x 20 x Bucket Width		
Bolt-on Edge Item#	811790	811830	811870

Skid Steer Low Profile Tine Grapple

The LPTG Series Tine Grapple easily moves rocks, brush, wood, metal and other materials while leaving the dirt on the ground. The grapple is ideal for various applications including construction site demolition and clean-up, storm clean-up, and landscaping. Features include 5 1/2" tine spacing, 3,000 psi cylinders with cylinder guards to protect the cylinders and components. Hoses are equipped with "connect under pressure" flat-faced couplers.



Tine Grapple Specifications

Model	LPTG-72	LPTG-78	LPTG-84
Overall Width (in/cm)	72 / 183	78 / 198	84 / 213
Tine Spacing (in/cm)	5 1/2 / 14		
Number of Tines	14	15	16
Tine Length (in/cm)	29.5 / 75		
Grapple Opening (in/cm)	36.5 / 93		
2 - Hydraulic Cyl. (psi/bar)	3000 / 207		
Flat-Faced Couplers (in/cm)	1/2 / 13 Body - Connect Under Pressure		
Mount Type	"Universal" Skid Steer		
Weight (lb/kg)	820 / 372	864 / 392	896 / 406
Item #	811750	811800	811840



Worksaver, Inc.

P.O. Box 100, Litchfield, IL 62056-0100

Phone: 217-324-5973 • Fax: 217-324-3356

E-mail: sales@worksaver.com

Web: www.worksaver.com

Information Provided By:



Worksaver.

Implements
Designed for
Your
Lifestyle.

Worksaver®

3-pt. Mounted PTO Driven Rotary Brooms

- Designed for Category I Tractors.
- Double Gearbox Drive for smooth power transmission and low maintenance.
- Top “T-Shaft” gearbox allows easy reversal of brush rotation.
- Angles up to 30-degrees right or left.
- 32” Diameter brushes available in Poly (P) or combination Poly / Wire (PW).
- Height Adjustment Chains maintain even operating position.
- Equipped with Parking Stands.
- Manual or Hydraulic Angle Kit

ROTARY BROOM SPECIFICATIONS

Note: Complete Broom Assembly Requires Either Manual or Hydraulic Angle Kit Below

Model	RMB-326P	RMB-327P	RMB-326PW	RMB-327PW
Overall Width (in/cm)	81 / 206	93 / 236	81 / 206	93 / 236
Brush Diameter (in/cm)	32 / 81	32 / 81	32 / 81	32 / 81
Mounting System	3-pt. (Cat. I)	3-pt. (Cat. I)	3-pt. (Cat. I)	3-pt. (Cat. I)
Brush Material	Poly	Poly	Poly / Wire	Poly / Wire
PTO RPM Range	540	540	540	540
Sprinkler System	Optional	Optional	Optional	Optional
Dirt Deflector	Optional	Optional	Optional	Optional
Path @ 30 Degree Angle (in/cm)	64 / 163	76 / 193	64 / 163	76 / 193
Weight (lb/kg)	740 / 336	840 / 381	740 / 336	840 / 381
Item #	610755	610805	610750	610800
Angle Adjustment Kits				
5 Pos. Man. Angle Kit #	610702	610702	610702	610702
Hydraulic Angle Kit #	610703	610703	610703	610703

Note: Worksaver Rotary Brooms are designed for tractors with greater than 1,000 lbs. 3-pt. lifting capacity.



Worksaver, Inc.

P.O. Box 100, Litchfield, IL 62056-0100
Phone: 217-324-5973 • Fax: 217-324-3356
E-mail: sales@worksaver.com
Web: www.worksaver.com

Information Provided By:



Worksaver.

*Designed.
Engineered.
Remarkable
Value.*



Model SS-585 Mixer

Skid Steer Mixer. Ideal for all mixing jobs.



Worksaver Model SS-585 Mixer

- All welded steel drum construction with internal paddles for uniform mixing and clean dumping.
- Compact, trouble free, long life design with few moving parts.
- Ideal for all mixing jobs. Five (5) cu./ft. capacity (1 bag mix).
- Hydraulic motor drive for easy operation and low maintenance requirements..
- Parking stands for easy storage.
- Number 50-roller chain drives mixing drum.
- Bronze Oilite (greaseable) bearings provides long bearing life.
- Direct mount all welded frame fits “universal style” skid steer attachment system
- Flow control valve allows easy control of speed of mixer.
- Simple lever control for engagement / disengagement of mixing drum.

MODEL SS-585 MIXER SPECIFICATIONS

Capacity	Five (5) cu./ft. (1 bag mix)
Drum opening (in/mm)	20 (508)
Overall drum length (in/mm)	32 (813)
Diameter of drum (in/mm)	30 (762)
Drum construction	Welded Steel
Drive system	Hydraulic
Hydraulic requirements.....	8 GPM (min)
Drum drive	#50 roller chain
Drive ratio	6.4:1
Shield drum drive	Standard
Bearing type	Bronze Oilite (greaseable)
Hydraulic motor	Standard
Mounting.....	“Universal style” skid steer
Parking stands.....	Standard
Shipping weight (lb./kg)	436 (198)
Product Computer Number	780900



READ AND UNDERSTAND OPERATOR'S MANUAL BEFORE OPERATION.

Worksaver Inc. has a corporate policy of continuous product improvement and development; therefore, specifications are subject to change without any advance notice. Worksaver Inc. is not responsible for differences between specifications or illustrations contained in this publication and the actual equipment.

Worksaver.



Worksaver, Inc.

P.O. Box 100, Litchfield, IL 62056-0100
 Phone: 217-324-5973 • Fax: 217-324-3356
 E-mail: sales@worksaver.com
 Web: www.worksaver.com

Information Provided By:

