



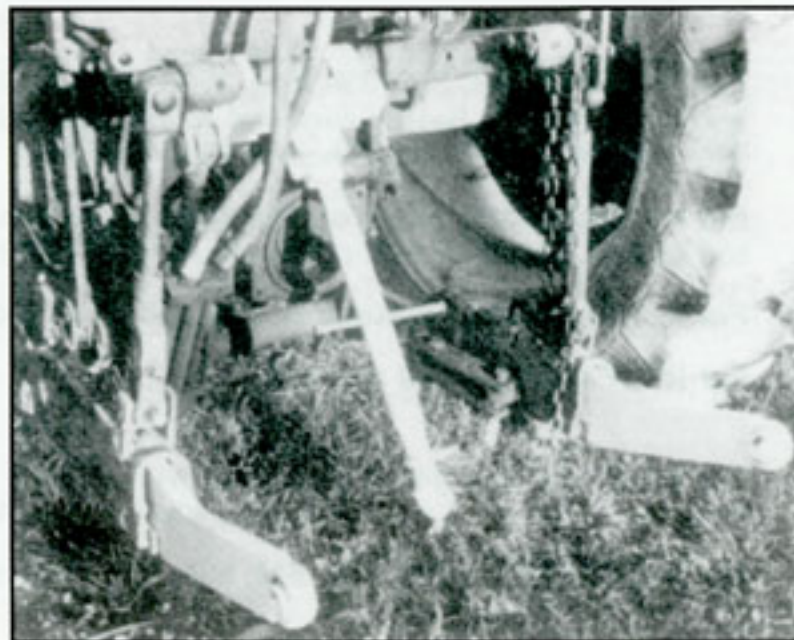
WORKSAVER®

9 WorkSaver Trail • P.O. Box 100 • Litchfield, IL 62056-0100 • (217) 324-5973 • Fax (217) 324-3356
Web: <http://www.worksaver.com> • E-Mail: sales@worksaver.com

Convert your I.H.C. 2-pt. Fast Hitch Tractor - to . . .

Standard 3-pt. Hitch

- ◆ GIVE YOUR TRACTOR GREATER VERSATILITY.
- ◆ ALL STANDARD 3-POINT EQUIPMENT WILL FIT.
- ◆ CONVERSION KIT ATTACHES QUICKLY AND EASILY.
- ◆ DISCONNECTS AND CONVERTS BACK TO 2-POINT IN MINUTES.
- ◆ INCREASES VALUE OF TRACTOR.



HK-126 mounted on IHC 560

WORKSAVER 2-pt. Conversion Kits

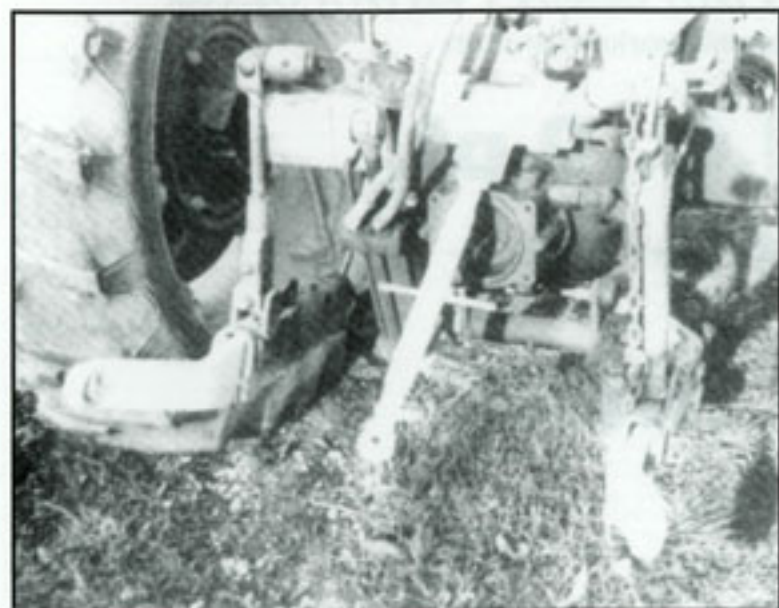
. . . are ruggedly constructed. . . HIGH-GRADE Steel Flame-Cut Prongs. Heavy duty screw type adjustable top link. Top link has ball sockets on each end. Lift arms have 2-way Cat. I and Cat. II ball sockets to attach to implement drawpin. Lift arms angle upward 3" to increase lifting height of implements. Available for 26" (Cat. I) or 32" (Cat. II) drawbar spacing.

ADVANTAGES

- ◆ Provides true 3-Pt. linkage control and weight transfer.
- ◆ Easy to install or remove from your tractor.
- ◆ Simplifies changing from one piece of equipment to another.



2-POINT CONVERSION KITS



HK-132 mounted on IHC 560

FEATURES

Easy on and off in just a few minutes. Converts 2-Pt. fast hitch to Standard 3-Pt. Both 2-Pt. and 3-Pt. equipment can be used. Makes your tractor more versatile.

Screw type top link with plenty of adjustment. Easy to use positive "snap lock" linchpins. Available with either 26" or 32" spacing. Sixteen kits cover most IHC models. Instruction manual and parts list included.

Model Number	Factory Number	Description	Shipping Wt. (Lbs.)
WORKSAVER 2-PT. TO 3-PT. CONVERSION KITS			
HK-126	864126	Cat. I For IHC/FARMALL 300, 330, 340, 350, 450, 460, 560	68
HK-132	864132	Cat. II and other models having exposed round rockershaft (Not for 460 or 560 utility models. See below.)	70
HK-226	864226	Cat. I For IHC/FARMALL 240. (Top link bracket replaces casting at top rear of tractor or belt pulley housing.) 3" prong.	67
HK-326	864326	Cat. I For IHC/FARMALL C, Super C, 200, 230 (2½" prongs)	67
HK-426	864426	Cat. I For IHC/FARMALL 544 and 656	72
HK-432	864432	Cat. II	77
HK-526	864526	Cat. I For IHC/FARMALL 240 (For models with 3 holes on rear housing of mount 5 x 5.5 flat plate top link bracket.) 3" prongs.	67
HK-626	864626	Cat. I For IHC/FARMALL 706, 756, 806, 826, 856, 1206 and other models	72
HK-632	864632	Cat. II	77
HK-726	864726	Cat. I For IHC/FARMALL 606	70
HK-732	864732	Cat. II	72
HK-826	864826	Cat. I For IHC/FARMALL 404, 504, and some 300, 350 models. For all 300, 330, 340, 350 and 574 Utility models. (Rockershaft not exposed or not round.) (3 threaded holes on rear housing.)	69
HK-1026	864134	Cat. I For FARMALL 400 Row Crop (With no exposed rockershaft)	72
HK-1032	864135	Cat. II	74
HK-3026	864336	Cat. I For FARMALL 300 Row Crop (With no exposed rockershaft)	72
HK-1126	864127	Cat. I For IHC 460 and 560 Utility Models	68
HK-1132	864128	Cat. II	69
HK-926	864926	26" Pair of Lower 3" Prong Assemblies only	44
HK-932	864932	32" Pair of Lower 3" Prong Assemblies only	50
SPECIFY TRACTOR MODEL WHEN ORDERING			

DISTRIBUTED BY



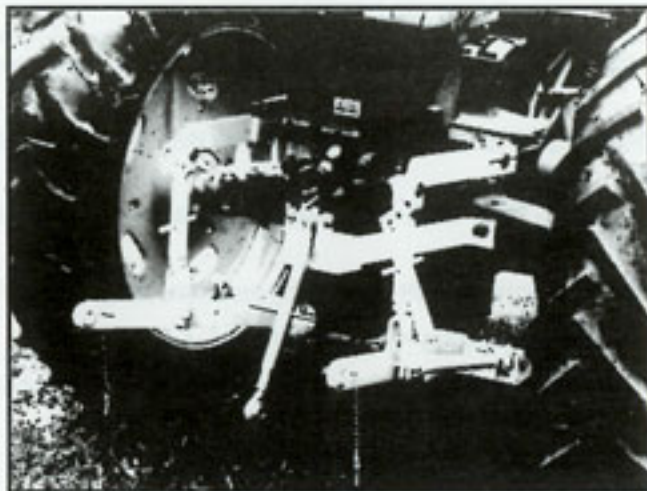


Worksaver®

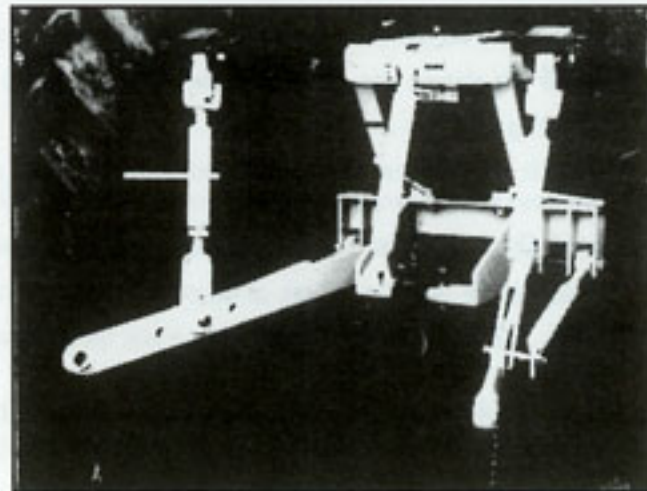
3-Point ADAPTER KITS

Compare these outstanding ADVANTAGES:

- Easy to install or remove from tractor.
- Provide power lifting and lowering of equipment.
- Save time and labor – make hookups quickly, easily.
- Make tractor easier to use in cramped quarters.
- Simplify changing from one piece of equipment to another.
- Added weight makes for better traction.
- Tractor can use more implements.
- Increases value of tractor.

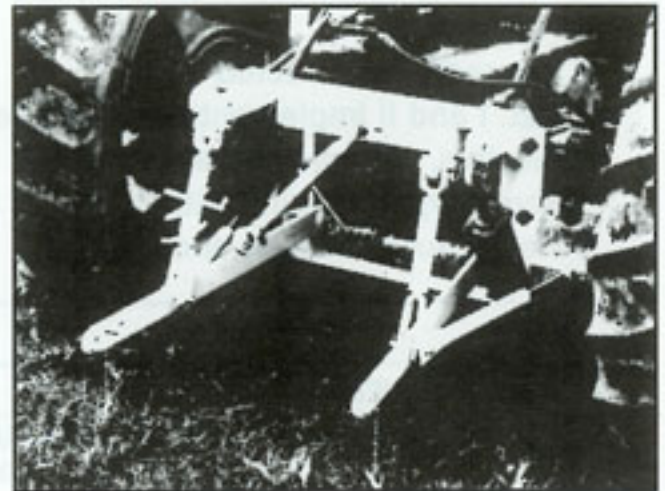


Model HK-203
For John Deere A, B, G, 50, 60



Model HK-306
For Allis Chalmers D-14, D-15

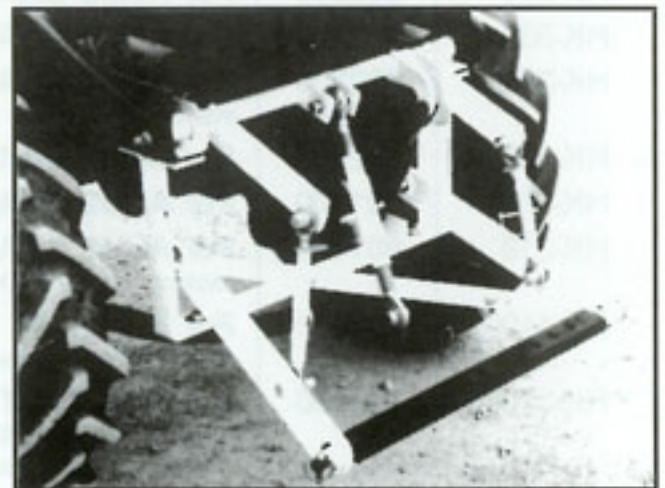
HK-11062 Heavy Duty Adapter Kit



For INTERNATIONAL/FARMALL
H, M, MTA, Super H, M, & MTA, 300, 340, 350, 400,
450, 560, and 656.

Worksaver 3-Pt. Adapter Kits

- Lift and lower implements hydraulically – Make it easy to transport equipment, to work terraced land, cross grassed waterways, cross ditches, roads, etc.
- Kits are ruggedly constructed. Quality screw type top links are adjustable. Ball sockets and turnbuckles provide flexibility. Kits for larger tractors have 2-way lift arm balls for both Cat. I and Cat. II implements.
- Are easy to install. Instructions are included.



Model HK-308
For Allis Chalmers B & C (Drawbar not included.)



Worksaver, Inc.

P.O. Box 100, Litchfield, IL 62056-0100
Phone: 217-324-5973 • Fax: 217-324-3356
E-mail: sales@worksaver.com
Web: www.worksaver.com

WS-HK004-LS (4/03)

Information Provided By:





3-Pt. ADAPTER KITS

bring your tractor up-to-date at a cost far below a new tractor . . .

Increases Tractor's Use and Value!

FEATURES

- Ruggedly constructed
- Cat. I and II implements can be used on some kits
- Flexible, yet adjustable for rigidity
- Screw-type Top Link with plenty of adjustment
- Heavy duty ball-type sockets
- Adjustment for various lifting heights
- Turnbuckle lift arm adjustment on both sides
- Lock nuts for positive adjustment hold
- Instruction manual and repair parts list with each kit

MODEL	STK #	DESCRIPTION	SHIP WT.
HK-90	862300	For IHC/FARMALL Standard Cub (not for Low-Boy or Cadet Lawnmower) (uses existing hydraulic lift) Cat. 0/I	125
HK-91	862360	For IHC/FARMALL Cub Lo-Boy (not for 154, 184, 185 models) (not for Cadet Cub Lawnmower) (uses existing hydraulic lift) Cat. 0/I	124
HK-95	862330	For IHC/FARMALL Super A, 100, 130, 140 with standard pulltype drawbar (uses existing hydraulic lift) Cat. I	80
HK-96	862331	For IHC/FARMALL 100, 130, 140 with IH 1 Pt. fast hitch (uses existing hydraulic lift) Cat. I	65
HK-102	861102	For IHC, C, Super C, 200, 230 (uses existing hydraulic lift) Cat. I	190
HK-201	861200	For JOHN DEERE M & MT, (fixed 26" spacing) (cannot be used with lift type plows) Cat. I	90
HK-202	861202	For JOHN DEERE 520, 530, 620, 630 Cat. I/II	134
HK-203	865300	For JOHN DEERE Models A, B, G, 50, 60 and 70. Cat. I/II NOTE: if tractor serial number is below A#A-561903, B#B-186134 and G#G-18700, then a later model drawbar support bracket must be installed. For A order #AA-3843, B order #AB-3507R, G order #AF-904R from JD dealer or salvage yard. For model 70 order HK-203-70 #865325	176
HK-305	861405	For ALLIS CHALMERS WD and WD-45 (kit allows use of original swinging drawbar)	175
HK-306	862650	For ALLIS CHALMERS D14, D15 (kit allows use of original swinging drawbar)	175
HK-307	862600	For ALLIS CHALMERS CA (swinging drawbar included) Cat. I	120
HK-308	862800	For ALLIS CHALMERS B, C (NOTE: Tractors must be equipped with hydraulic pump and standard drawbar - parts available from used parts companies) Cat. I hitch (hyd. cyl. & hose included)	110
HK-315	862680	For ALLIS CHALMERS D17 and D17 Series 1-3 (kit allows use of orig. swinging drawbar)	205
HK-317	861800	For ALLIS CHALMERS D17, Series IV (kit allows use of original swinging drawbar)	175
HK-319	861419	For ALLIS CHALMERS D19, 190, 190XT NOTE: if tractor does not have 4 holes in rear lift casting then order HK-319W (kit allows use of original swinging drawbar)	220
*HK-1106	865000	For IHC H, M, MTA, Super H, M & MTA, MD, 300, 340, 350, 400, 460, 504 (Requires one hydraulic cylinder) Optional bracket #861190 allows use of swinging drawbar. Cat. I/II	237
*HK-11062	865100	For IHC M, MTA, Super M & MTA, MD, 400, 450, 460, 504, and 560 Also for 544 and 656 with spacer #861188. (Requires two hydraulic cylinders) (Order optional bracket #861190 to use swinging drawbar) Cat. I/II	260
*HK-1678	862010	For OLIVER Models 66, 77, 88, Super 66, Super 77, Super 88, 660, 770 (use one hydraulic cylinder) (use original swinging drawbar)	242
*HK-16782	862200	For OLIVER Models 77, 88, Super 77, Super 88, 660, 770 and 880 (use two hydraulic cylinders) (use original swinging drawbar)	265

*Hydraulic Cylinders and hoses are not included.

DISTRIBUTED BY:

Recommend use of standard 3" x 8" Hydraulic Cylinder.



WS-HK004-LS

Work saver Inc. has a corporate policy of continuous product improvement and development; therefore, specifications are subject to change without any advance notice. Work saver Inc. is not responsible for differences between specifications or illustrations contained in this publication and the actual equipment.