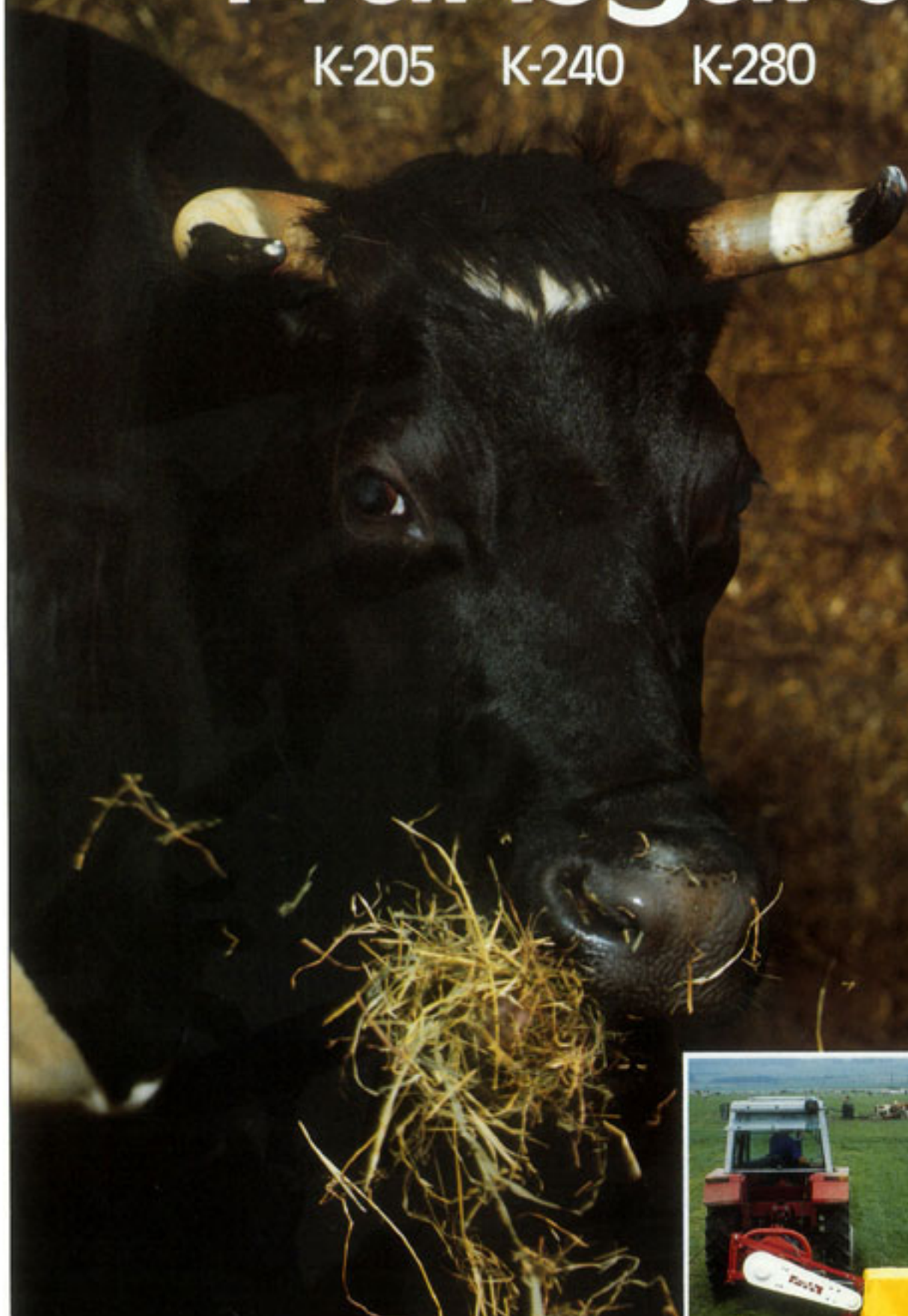


Fransgård

K-205 K-240 K-280





Fransgård

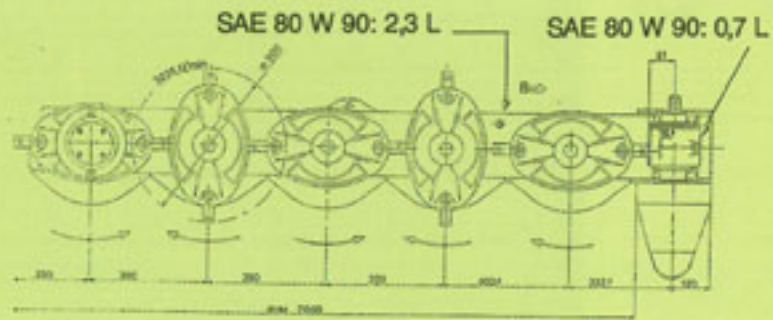
DISC-MOWER

- A robust and heavy construction.
- The machine is designed to easily follow the ground contours.
- Strong counterbalance spring to minimize ground pressure.
- Efficient brakeaway system.
- PTO incorporate overrun device.
- Wellbalanced cutterbar insures stable operation.
- Elliptical discs to insure smooth passage of material over cutterbar.
- Free swinging blades hold in working position by centrifugal force to insure efficient cutting and protection against stones.
- Heavy duty safety curtain.
- The curtain frame is secured to the outer end of the cutterbar for durability.
- Cutterbar hydraulic raised for transport.

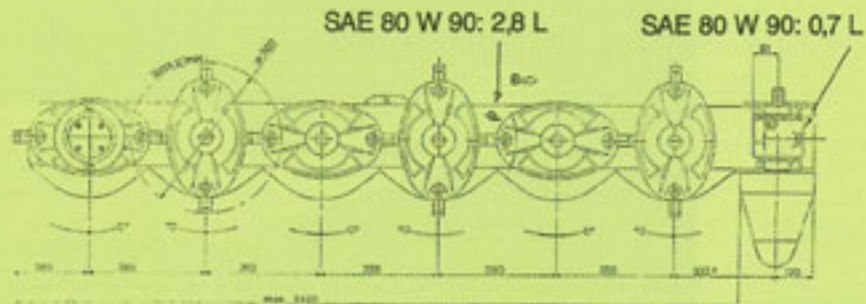
Discs assemblies can be separately removed for easy maintenance...

DISC-MOWER

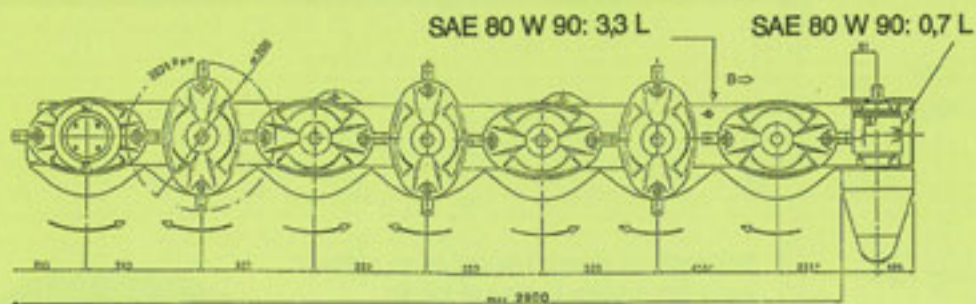
K-205



K-240



K-280



TECHNICAL DATA:

	K-205	K-240	K-280
Working width:	2,05 m / 6'8"	2,40 m / 8'0"	2,80 m / 9'3"
Transport width:	1,90 m / 6'3"	1,90 m / 6'3"	1,90 m / 6'3"
Weight:	395 kg / 865 lbs	440 kg / 960 lbs.	490 kg / 1070 lbs
Power requirement:	30 kW / 40 hp	37 kw / 50 hp	45 kw / 60 hp
Power take-off:	540 rpm	540 rpm	540 rpm
Number of discs:	5	6	7
Number of blades:	10	12	14
Working speed:	6-15 km/t 3,5 - 9 mph	6-15 km/t 3,5 - 9 mph	6-15 km/t 3,5 - 9 mph

Fransgård for quality and reliability.
Fransgård machines are available
worldwide.

Fransgård